

Specification of Performance

6.7mm

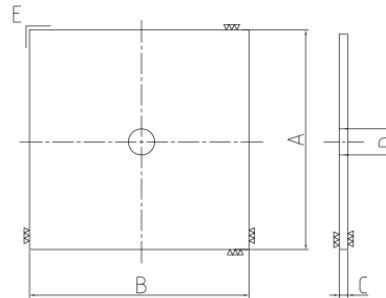
| Frequency | Typical | Specification |
|-----------|---------|---------------|
| 30 MHz | -25.0dB | -19.5dB Max |
| 50 MHz | -29.0dB | |
| 100 MHz | -31.0dB | |
| 300 MHz | -20.0dB | |
| 500 MHz | -15.0dB | |
| 700 MHz | -12.0dB | |
| 1000 MHz | -10.5dB | -10.0dB Max |

5.2mm

| Frequency | Typical | Specification |
|-----------|---------|---------------|
| 30 MHz | -22.0dB | -19.5dB Max |
| 50 MHz | -27.0dB | |
| 100 MHz | -39.0dB | |
| 300 MHz | -23.0dB | |
| 500 MHz | -17.0dB | |
| 700 MHz | -15.0dB | |
| 1000 MHz | -12.0dB | -10.0dB Max |

Part No. and Dimension

| PART No. | Dimension(mm) | | Weight |
|----------|----------------|-----------|--------|
| TILE 67 | A : Width | 100 ± 0.1 | ≒ 331g |
| | B : Length | 100 ± 0.1 | |
| | C : Thickness | 6.7 ± 0.1 | |
| | D : Hole | 10 ± 0.2 | |
| | E : Squareness | < 0.15 | |



| PART No. | Dimension(mm) | | Weight |
|----------|----------------|-----------|--------|
| TILE 52 | A : Width | 100 ± 0.1 | ≒ 253g |
| | B : Length | 100 ± 0.1 | |
| | C : Thickness | 5.2 ± 0.1 | |
| | D : Hole | 10 ± 0.2 | |
| | E : Squareness | < 0.15 | |