

## Application of ESQ/USQ types

- Broadband transformer
- Current compensated chokes
- Common mode filter

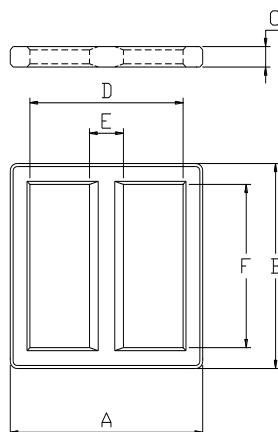


Fig. 1

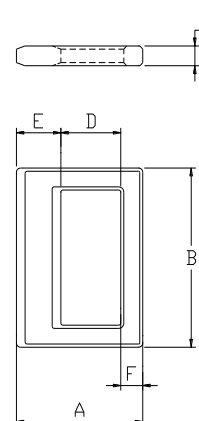


Fig. 2

## Product overview ESQ/USQ type

Model	Dimension(mm)						Parameter				Fig
	A	B	C	D	E	F	Le(mm)	Ae(mm <sup>2</sup> )	Ve(mm <sup>3</sup> )	C	
ESQ 2020	20.1 ±0.4	20.1 ±0.4	4.4 ±0.2	15.7 MIN	4.0 ±0.2	15.7 MIN	45.4	62.0	2815	1.717	1
ESQ 2222	23.5 ±0.4	22.0 ±0.4	3.8 ±0.2	19.4 ±0.3	3.8 ±0.2	17.6 ±0.3	46.4	62.0	2877	1.680	1
ESQ 2424	24.45 +0.45 -0.25	24.45 +0.45 -0.25	4.0 ±0.3	19.1 MIN	4.0 ±0.3	19.1 MIN	60.0	62.0	3720	1.299	1
ESQ 2525	25.1 ±0.4	25.6 ±0.4	4.0 ±0.3	20.1 ±0.4	4.0 ±0.3	20.8 ±0.4	45.3	119.0	5391	3.220	1
ESQ 2626	26.1 ±0.4	26.1 ±0.4	4.4 ±0.2	21.2 ±0.3	4.4 ±0.2	21.2 ±0.3	46.9	119.0	5581	3.189	1
ESQ 2828	28.45 ±0.55	28.45 ±0.55	5.0 ±0.3	22.2 MIN	5.0 ±0.2	22.2 MIN	55.5	118.0	6549	2.660	1
ESQ 2930	29.0 ±0.4	30.0 ±0.4	5.0 ±0.3	23.0 ±0.3	5.0 ±0.25	24.0 ±0.3	56.7	170.0	9639	3.770	1
ESQ 3535	35.0 ±0.4	35.0 ±0.4	7.5 ±0.3	27.0 REF	7.5 ±0.3	27.0 REF	75.8	161.0	12204	2.730	1
USQ 1914	14.2 ±0.5	19.6 ±0.3	5.0 ±0.3	7.0 ±0.2	4.0 ±0.2	3.2 ±0.2	51.1	16.7	852	0.410	2
USQ 2014	14.1 ±0.25	20.6 ±0.3	4.6 ±0.2	7.4 REF	4.3 ±0.2	2.4 ±0.15	55.7	13.1	727	0.295	2
USQ 2014N	14.1 ±0.25	20.6 ±0.3	4.6 ±0.2	7.35 MIN	4.2 ±0.2	2.4 ±0.15	55.8	12.9	721	0.291	2
USQ 2114	14.9 ±0.3	21.5 ±0.5	4.5 ±0.3	7.9 ±0.3	4.2 ±0.3	-	61.0	13.8	840	0.284	2
USQ 2115A	15.6 ±0.3	21.5 ±0.4	3.7 ±0.2	6.9 ±0.2	5.0 ±0.2	3.7 ±0.2	56.3	13.7	770	0.305	2
USQ 2618	25.6 ±0.4	17.6 ±0.4	5.2 ±0.25	8.7 MIN	5.2 ±0.15	3.4 ±0.15	68.8	19.0	1307	0.347	2

Inductance,AL(nH)

Model	Materials	
	HM3A	HM5A
ESQ 2020		MIN 4400 <sup>3)</sup>
ESQ 2222	2500 <sup>1)</sup>	3400 <sup>1)</sup>
ESQ 2424	3100 <sup>3)</sup>	3600 <sup>1)</sup>
ESQ 2525	2460 <sup>3)</sup>	
ESQ 2626		3910 <sup>1)</sup>
ESQ 2828	4340 <sup>3)</sup>	4700 <sup>1)</sup>
ESQ 2930	3470 <sup>2)</sup>	4900 <sup>1)</sup>
ESQ 3535	7650 <sup>3)</sup>	8400 <sup>2)</sup>
USQ 1914	4300 <sup>2)</sup>	
USQ 2014	2100 <sup>2)</sup>	2800 <sup>1)</sup>
USQ 2014N	2100 <sup>2)</sup>	2800 <sup>1)</sup>
USQ 2114	2200 <sup>3)</sup>	
USQ 2115A	2100 <sup>1)</sup>	
USQ 2618		3230 <sup>1)</sup>

Note:1) 10kHz, 0.1V

2) 1kHz, 0.1V

3) 1kHz, 1V

\* Tolerance :  $\pm 25\%$ (except for HM5A),  $\pm 30\%$ (only HM5A)

\* ESQ 2424's bobbin is 5turns