

HT Core



Application of HT types

- EMI filter

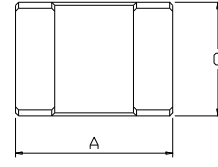
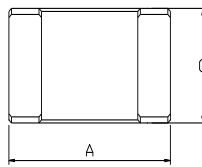
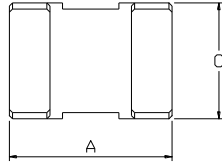
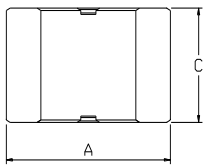
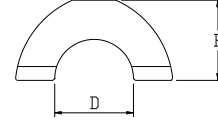
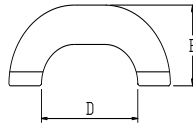
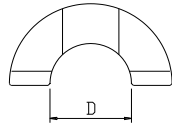
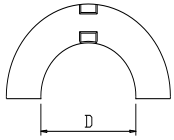


Fig. 1

Fig. 2

Fig. 3

Fig. 4

Product overview HT type

Model	Dimension(mm)					Fig
	A	B	C	D	E	
HT 2513	25.00 ±0.3	15.00 ±0.3	13.00 ±0.3	-	-	1
HT 3814	38.00 +0.4 -0.5	22.00 ±0.5	14.00 ±0.5	-	-	1
HT 4815	48.00 +0.4 -0.5	30.00 ±0.5	15.00 ±0.5	-	-	1
HT 1527	15.00 ±0.3	7.55 ±0.15	9.00 ±0.3	27.00 ±0.5	25.00 ±0.5	2
HT 1628	16.00 ±0.3	7.80 ±0.15	8.30 ±0.2	28.05 ±0.5	26.00 ±0.5	3
HT 2629	26.00 ±0.4	8.30 ±0.15	29.00 ±0.5	15.00 ±0.3	27.00 ±0.5	3
HT 2629S	25.94 ±0.3	13.30 ±0.1	29.00 ±0.4	15.00 ±0.25	27.00 ±0.4	4
HT 3329	30.2 ±0.4	11.1 ±0.2	29.00 ±0.25	10.2 ±0.2	27.00 ±0.4	3

Impedance, Z(Ω)

Model	Materials								
	TM1B		HM3A	YM7		YM10		YM12	
	10MHz	15MHz		10MHz	100MHz	10MHz	100MHz	10MHz	100MHz
HT 1527						34.8 ²⁾	90.2 ²⁾		
HT 1628						38.3 ²⁾	114.2 ²⁾		
HT 2629						47.9 ²⁾	161.4 ²⁾		
HT 2629S	440 ¹⁾	505 ¹⁾							

Note : 1) 1.5Ts , 1V

2) 0.5Ts , 0.1V